

Toowoomba Regional Council

Subordinate Local Law No. 5 (Parking) 2011

Contents

Part 1	Preliminary	2
	1 Short title	2
	2 Purpose and how it is to be achieved	2
	3 Authorising local law	2
	4 Definitions	2
Part 2	Declaration of parking areas for the TORUM Act	2
	5 Declaration of traffic areas—Authorising local law, section 5	2
	6 Declaration of off-street regulated parking areas—Authorising local law, section 6	3
Part 3	Parking contrary to parking restriction	3
	7 Parking permits issued by local government—Authorising local law, section 7(2)	3
	8 Commercial vehicle identification labels — Authorising local law, section 8(2)	5
Part 4	Minor traffic offence infringement notice penalties	5
	9 Infringement notice penalty amounts—Authorising local law, section 9	5
Schedule 1	Declaration of traffic area	6
Schedule 2	Declaration of off-street regulated parking areas	7
Schedule 3	Infringement notice penalty amounts for certain minor traffic offences	25
Schedule 4	Dictionary	29



Part 1 Preliminary

1 Short title

This subordinate local law may be cited as *Subordinate Local Law No. 5 (Parking) 2011*.

2 Purpose and how it is to be achieved

- (1) The purpose of this subordinate local law is to supplement *Local Law No. 5 (Parking) 2011*, which provides for the exercise of local government powers authorised under the TORUM Act.
- (2) The purpose is to be achieved by providing for—
 - (a) the establishment of traffic areas and off-street regulated parking areas; and
 - (b) the persons that may be issued with a parking permit; and
 - (c) the vehicles that may be issued with a commercial vehicle identification label; and
 - (d) the infringement notice penalty amounts for minor traffic offences.

3 Authorising local law

The making of the provisions in this subordinate local law is authorised by *Local Law No. 5 (Parking) 2011* (the **authorising local law**).

4 Definitions

- (1) Particular words used in this subordinate local law have the same meaning as provided for in the authorising local law.
- (2) The dictionary in schedule 4 defines particular words used in this subordinate local law.

Part 2 Declaration of parking areas for the TORUM Act

5 Declaration of traffic areas—Authorising local law, section 5

- (1) For section 5(1) of the authorising local law, the part of the local government area shown hatched in black on the map in schedule 1 is declared to be a traffic area.
- (2) For section 5(2) of the authorising local law, the boundary of the traffic area is indicated by a bold line circumscribing the area shown hatched in black on the map in schedule 1.

6 Declaration of off-street regulated parking areas—Authorising local law, section 6

- (1) For section 6(1) of the authorising local law, each area of land shown hatched in black on a map in schedule 2 is declared as an off-street regulated parking area.
- (2) For section 6(2) of the authorising local law, the boundaries of each off-street regulated parking area are indicated by a bold line circumscribing an area shown hatched in black on a map in schedule 2.

Part 3 Parking contrary to parking restriction

7 Parking permits issued by local government—Authorising local law, section 7(2)

- (1) This section prescribes—
 - (a) the persons that may be issued with a parking permit mentioned in section 7(1) of the authorising local law; and
 - (b) the circumstances in which the parking permits may be issued.
- (2) A parking permit (a **resident parking permit**) may be issued to a person whose circumstances are as follows—
 - (a) the person resides in a residence¹ situated on a section of road and parking immediately adjacent to the residence is regulated by time; and
 - (b) the issue of the parking permit would not unduly impede the flow of traffic either on the road or in the area; and
 - (c) the residence does not have, and cannot reasonably be provided with, adequate off-street parking; and
 - (d) if the parking permit is granted — there would not be in force more than 2 resident parking permits for the same residence.
- (3) A parking permit (a **community service organisation parking permit**) may be issued to a person whose circumstances are as follows—
 - (a) the person is a community service organisation²; and
 - (b) the person will use the parking permit for an activity which is consistent with the objects of the community service organisation; and
 - (c) the activity is undertaken on a section of road where —
 - (i) parking is regulated by time; and
 - (ii) the issue of the parking permit would not unduly impede the flow of traffic either on the road or in the area.
- (4) A parking permit (a **temporary parking permit**) may be issued to allow the holder of the parking permit to park 1 or more vehicles in a designated parking space or spaces for a period specified in the parking permit despite an indication on an

¹ See definition of **residence** in the dictionary.

² See definition of **community service organisation** in the dictionary.



official traffic sign to the contrary and despite the fact that paid parking would otherwise apply to the space or spaces.

- (5) A temporary parking permit may only be granted if the local government is satisfied that—
- (a) the applicant is engaged in some temporary activity affecting premises immediately adjacent to the designated parking space or spaces to which the application relates; and
 - (b) it is not reasonably practical for the applicant to carry out the activity unless the designated parking space or spaces to which the application relates are allocated to the applicant's exclusive use for the duration of the activity.
- (6) A parking permit (a **works zone parking permit**) may be issued to a person if the local government is satisfied that—
- (a) the part of the road to which the application relates is adjacent to a site at which the person is proposing to undertake building or construction work; and
 - (b) the carrying out of the building or construction work is lawful; and
 - (c) having regard to the nature of the building or construction work and the characteristics of the site, it is not reasonably practical for all work activity involving vehicle loading and unloading and associated vehicle movements to be confined within the site.
- (7) A parking permit (a **local government works parking permit**) may be issued to allow a person to park 1 or more vehicles in a designated parking space or spaces, and for a period specified in the parking permit despite an indication on an official traffic sign to the contrary if the person is—
- (a) a contractor or agent of the local government; and
 - (b) parking the vehicle or vehicles in the space or spaces—
 - (i) for the purpose of carrying out work for or on behalf of the local government; and
 - (ii) in the course of carrying out his or her duties for or on behalf of the local government.

Examples—

- A local government works parking permit may be issued to a carpenter, plumber, painter or other similar tradesperson who contracts with the local government for the performance of services. In the course of carrying out his or her duties, it is necessary for the tradesperson to have easy access to the tools of trade, and raw materials, of the tradesperson.
 - A local government works parking permit may not be issued to a town planner, solicitor, information technology or other similar consultant who contracts with the local government for the performance of consultancy services.
- (8) A parking permit (a **local government employee parking permit**) may be issued to a person whose circumstances are as follows—
- (a) the person is a local government employee; and
 - (b) for the primary purpose of carrying out his or her duties as a local government employee, the person parks his or her vehicle in a designated parking space on an off-street regulated parking area which is designated by

the local government for the parking of vehicles by the holder of a local government employee parking permit.

8 Commercial vehicle identification labels—Authorising local law, section 8(2)

- (1) For section 8(2) of the authorising local law, this section prescribes the vehicles that may be issued with a commercial vehicle identification label.
- (2) A vehicle may be issued with a commercial vehicle identification label if the vehicle—
 - (a) is used primarily, and daily, for carrying on a business; and
 - (b) in the carrying on of the business —requires the regular use of loading zones; and
 - (c) is a motor vehicle constructed, fitted or equipped for the carriage of persons.

Part 4 Minor traffic offence infringement notice penalties

9 Infringement notice penalty amounts—Authorising local law, section 9

For section 9 of the authorising local law, the infringement notice penalty amount³ for an offence mentioned in column 1 of schedule 3 is the corresponding amount stated in column 2 of schedule 3.

³ See section 5 of the *Penalties and Sentences Act 1992*. The value of a penalty unit is, for a local law, or an infringement notice under the *State Penalties Enforcement Act 1999* for an offence against a local law—the amount, not more than \$100.00, prescribed under a regulation. See section 2A of the *Penalties and Sentences Regulation 2005*. The value of the penalty unit for a local law made by a local government mentioned in schedule 2 of the Regulation, or an infringement notice under the *State Penalties Enforcement Act 1999* for an offence against a local law made by a local government mentioned in schedule 2 of the Regulation is \$75.00. The value of a penalty unit for a local law made by a local government not mentioned in schedule 2 of the Regulation, or an infringement notice under the *State Penalties Enforcement Act 1999* for an offence against a local law made by a local government not mentioned in schedule 2 of the Regulation, is \$100.00.



Section 5



Schedule 2 Declaration of off-street regulated parking areas

Section 6

Map of the Off-Street Regulated Parking Area Car Park No 1 (CP1) Toowoomba Bus Station – Neil Street Car Park



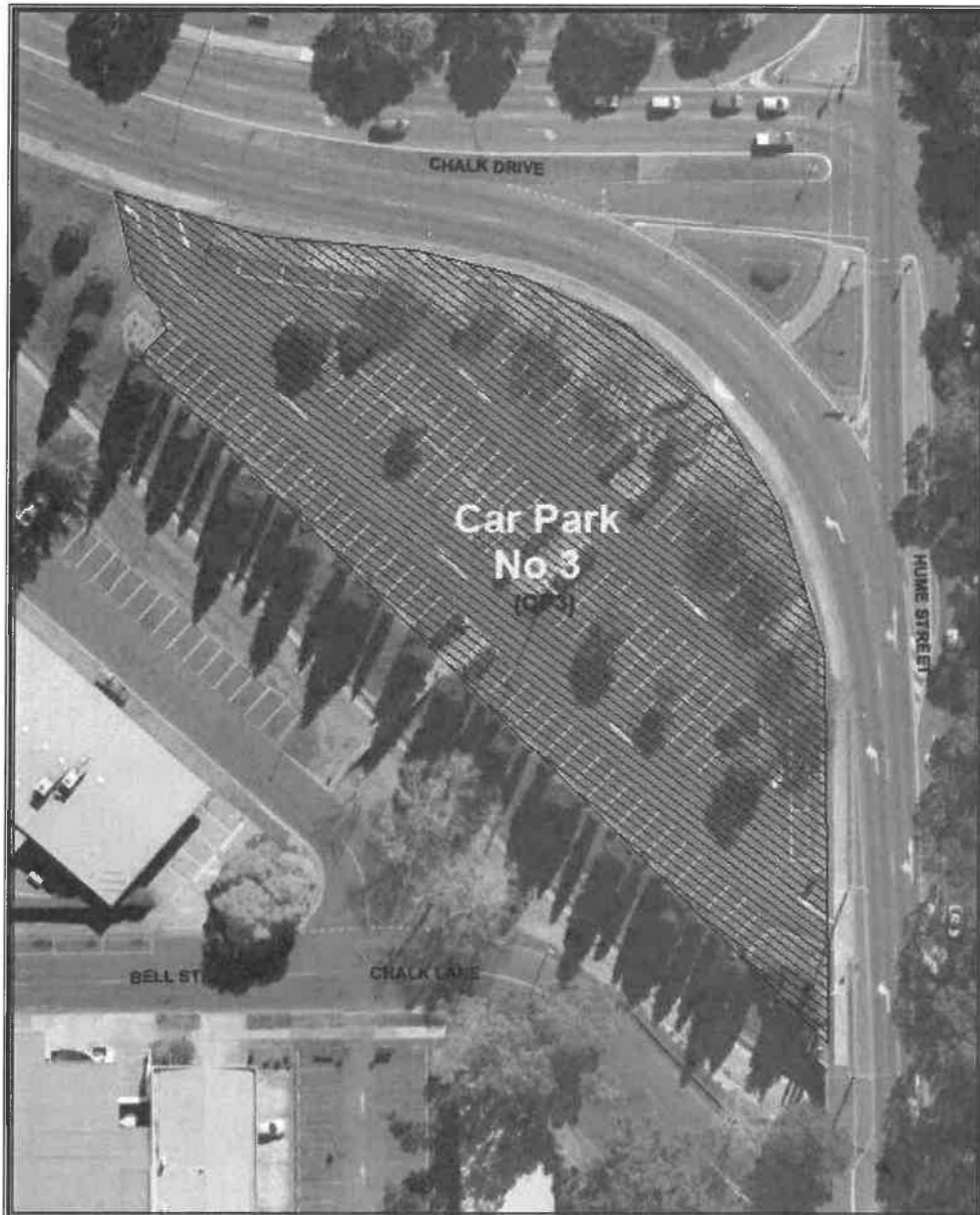
B

**Map of the Off-Street Regulated Parking Area Car Park No 2 (CP2)
Neil/Annand Street Car Park**



[Handwritten signature]

**Map of the Off-Street Regulated Parking Area Car Park No 3 (CP3)
Chalk Drive (South) Car Park**



16

**Map of the Off-Street Regulated Parking Area Car Park No 4 (CP4)
Toowoomba Aerodrome Car Park**



[Handwritten signature]

**Map of the Off-Street Regulated Parking Area Car Park No 5 (CP5)
Toowoomba City Library and Civic Square Car Park**



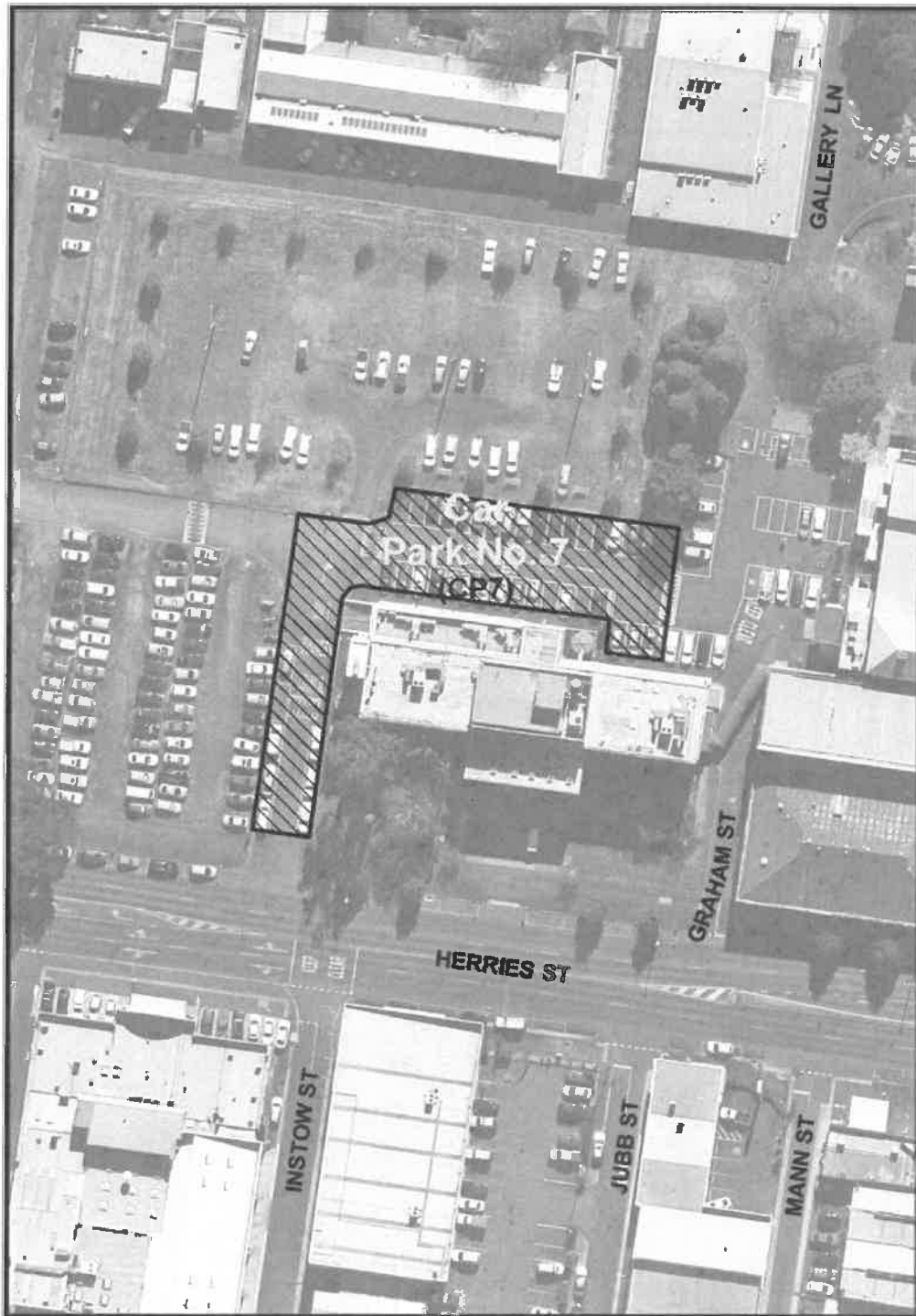
76

Map of the Off-Street Regulated Parking Area Car Park No 6 (CP6) Laurel Bank Park Car Park



16

**Map of the Off-Street Regulated Parking Area Car Park No 7 (CP7)
Council Administration Car Park**



B

**Map of the Off-Street Regulated Parking Area Car Park No 8 (CP8)
Julia Street Car Park**



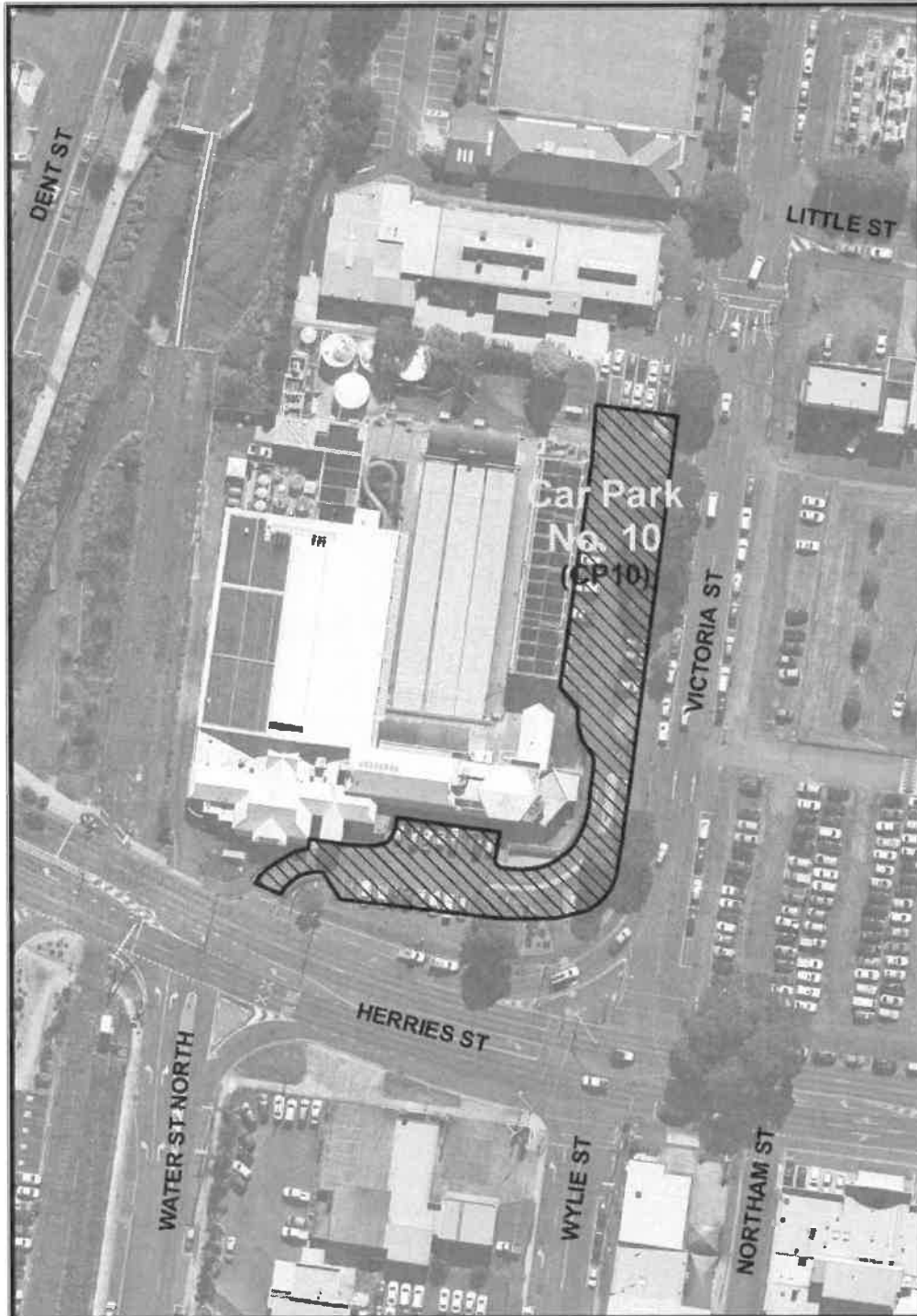
[Handwritten signature]

**Map of the Off-Street Regulated Parking Area Car Park No 9 (CP9)
City Hall Car Park**



28

**Map of the Off-Street Regulated Parking Area Car Park No 10 (CP10)
Aquatic Centre Car Park**



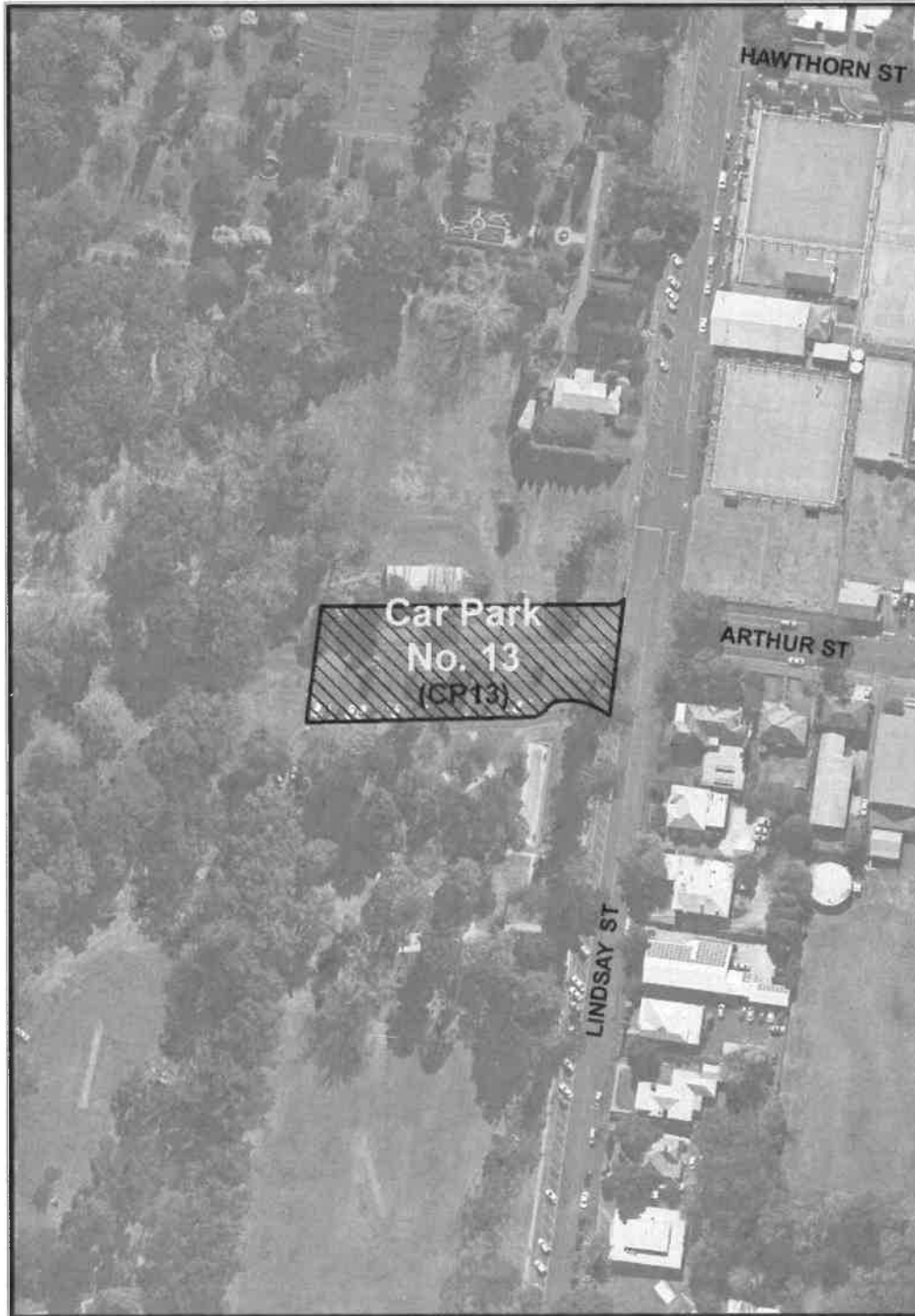
[Handwritten signature]

**Map of the Off-Street Regulated Parking Area Car Park No 12 (CP12)
Central Car Park**



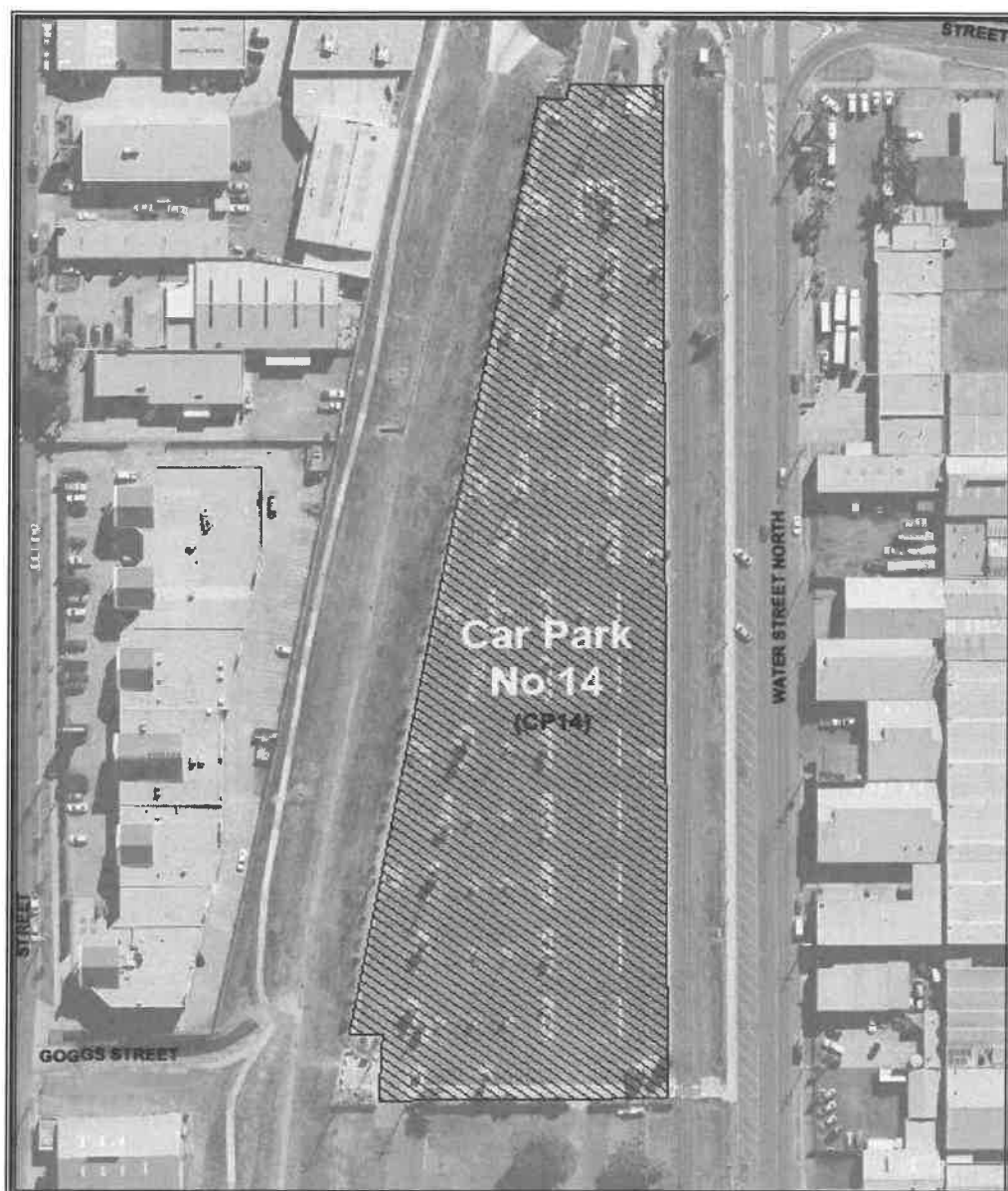
[Handwritten signature]

**Map of the Off-Street Regulated Parking Area Car Park No 13 (CP13)
Lindsay Street Car Park**



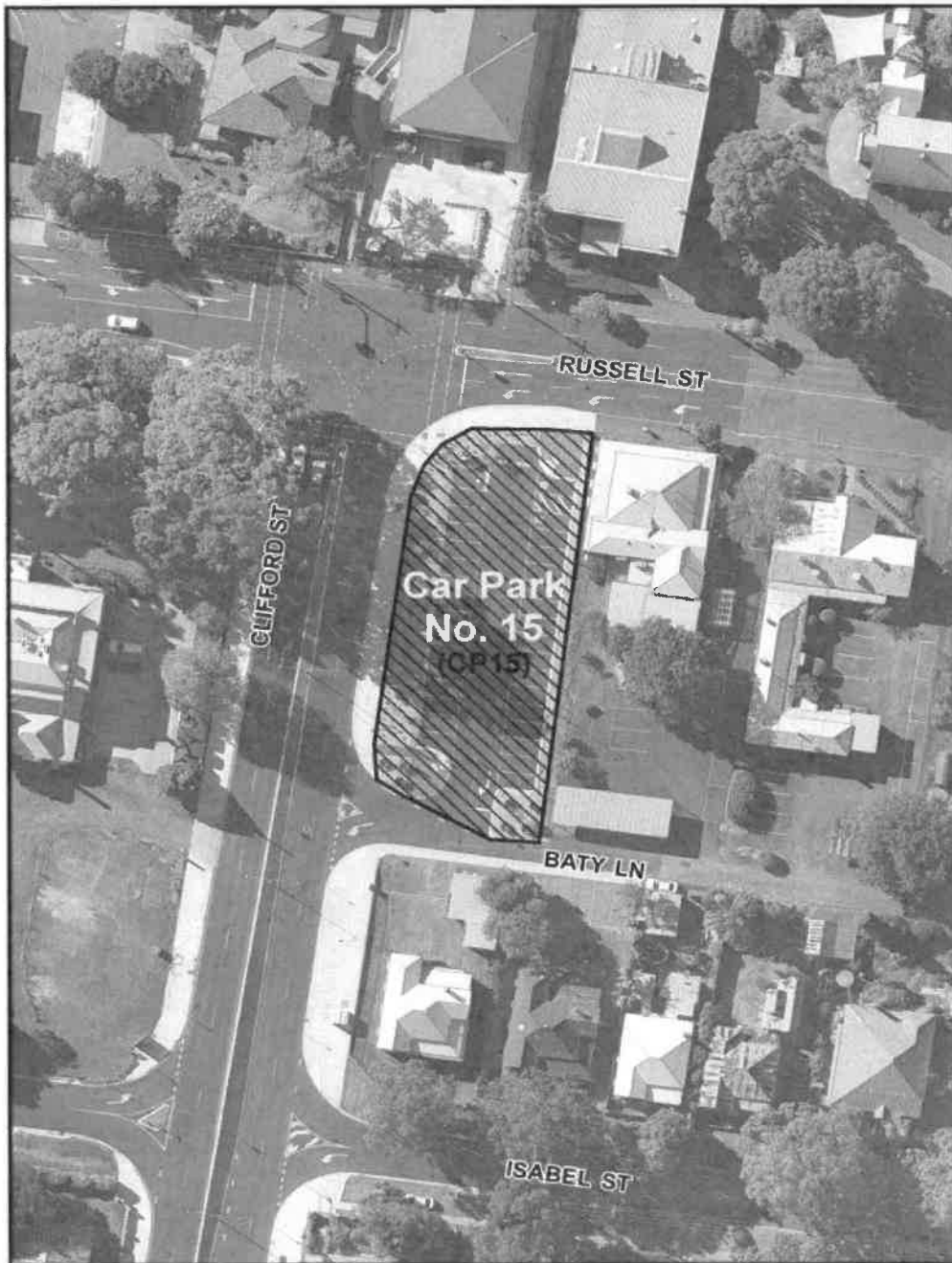
18

**Map of the Off-Street Regulated Parking Area Car Park No 14 (CP14)
Herries/Water Street Car Park**



18

**Map of the Off-Street Regulated Parking Area Car Park No 15 (CP15)
Clifford Street Car Park**



15

**Map of the Off-Street Regulated Parking Area Car Park No 16 (CP16)
Newington Park Car Park**



[Handwritten signature]

**Map of the Off-Street Regulated Parking Area Car Park No 17 (CP17)
Clewley Park Car Park**



[Handwritten signature]

**Map of the Off-Street Regulated Parking Area Car Park No 18 (CP18)
Station Street Car Park**



18

**Map of the Off-Street Regulated Parking Area Car Park No 19 (CP19)
Joseph Street Car Park**



[Handwritten signature]

Schedule 3 Infringement notice penalty amounts for certain minor traffic offences

Section 9

Column 1		Column 2
<i>Transport Operations (Road Use Management) Act 1995 provision</i>	Minor Traffic Offence	Infringement notice penalty amount
106(1)(a)(i)	Parking a vehicle in a designated parking space unless a parking meter or parkatarea installed for the space indicates that the parking fee has been paid	0.4 penalty units
106(1)(a)(ii)	Parking a vehicle in a designated parking space unless the person has done what is required by an authorised system that applies in relation to the space	0.4 penalty units
106(1)(b)	Parking a vehicle in a designated parking space for a time longer than the maximum time indicated on the official traffic sign installed for the space	0.5 penalty units
106(1)(c)	Parking a vehicle in a designated parking space if another vehicle is parked in the space	0.4 penalty units
106(1)(d)	Parking a vehicle in a designated parking space so that the vehicle is not wholly within the space	0.3 penalty units
<i>Transport Operations (Road Use Management – Road Rules) Regulation 2009 provision</i>	Minor Traffic Offence	Infringement notice penalty amount
167	Stopping on a length of road or in an area to which a no stopping sign applies	0.8 penalty units
168(1)	Unauthorised driver stopping on a length of road or in an area to which a no parking sign applies.	0.8 penalty units
169	Stopping at the side of a road marked with a continuous yellow edge line	0.8 penalty units
170(1)	Stopping in an intersection	0.8 penalty units

Column 1		Column 2
Transport Operations (Road Use Management – Road Rules) Regulation 2009 provision	Minor Traffic Offence	Infringement notice penalty amount
170(2)	Stopping within 20m of an intersection with traffic lights unless permitted by a sign	0.8 penalty units
170(4)(a)	Stopping within 10m of an intersection without traffic lights unless permitted by a sign	0.8 penalty units
172(1)	Stopping within 20m before a pedestrian crossing that is not at an intersection otherwise than as permitted by a sign	0.8 penalty units
172(1)	Stopping within 10m after a pedestrian crossing that is not at an intersection otherwise than as permitted by a sign	0.8 penalty units
176(1)	Stopping on a road contrary to a clearway sign	0.8 penalty units
179(1)	Stopping an unauthorised vehicle in a loading zone	0.5 penalty units
179(2)(a)	Authorised driver stopping in a loading zone for longer than 30 mins	0.4 penalty units
179(2)(b)	Authorised driver stopping in a loading zone for longer than permitted by a sign	0.4 penalty units
181	Unauthorised driver stopping in a works zone	0.4 penalty units
182(1)	Stopping an unauthorised vehicle in a taxi zone	0.8 penalty units
183(1)	Stopping an unauthorised vehicle in a bus zone	0.8 penalty units
183(1)	Stopping a bus in a bus zone contrary to a bus zone sign	0.8 penalty units
185(1)	Stopping an unauthorised vehicle in a permit zone	0.4 penalty units
186(1)	Stopping in a mail zone	0.4 penalty units

Column 1		Column 2
Transport Operations (Road Use Management – Road Rules) Regulation 2009 provision	Minor Traffic Offence	Infringement notice penalty amount
189(1)(a)	Stopping on a two way road between the centre of the road and another vehicle parked at the side of the road	0.4 penalty units
191	Stopping on a road so as to obstruct traffic	0.8 penalty units
195(1)	Stopping within 20m before a bus stop unless permitted by a sign	0.4 penalty units
195(1)	Stopping within 10m after a bus stop unless permitted by a sign	0.4 penalty units
197(1)	Stopping on a bicycle path, footpath, shared path or dividing strip or a nature strip adjacent to a length of road in a built-up area unless permitted by a sign	0.4 penalty units
198(2)	Stopping on or across a driveway unless dropping off or picking up, passengers	0.4 penalty units
199	Stopping near a postbox	0.4 penalty units
200(1)	Stopping a heavy vehicle, or long vehicle, on a length of road that is not in a built-up area, except on the shoulder of the road.	2 penalty units
200(2)	Stopping a heavy vehicle, or long vehicle, on a length of road in a built-up area for longer than 1 hour, unless the driver is permitted to stop on the length of road for longer than 1 hour by information on or with a traffic control device or the driver is engaged in dropping off or picking up goods for all of the period when the vehicle is stopped.	5 penalty units
202	Stopping contrary to a motorbike parking sign	0.3 penalty units
203(1)	Stopping contrary to a people with disabilities parking sign	2 penalty units

Column 1		Column 2
Transport Operations (Road Use Management – Road Rules) Regulation 2009 provision	Minor Traffic Offence	Infringement notice penalty amount
205(1)(a)	Parking for longer than the period indicated on a permissive parking sign	0.5 penalty units
208(1)	Parking on a two way road other than parallel and as near as practicable to the far left side of the road	0.3 penalty units
208(1)	Parking on a one way road other than to the far left or far right of the road unless permitted by a sign	0.3 penalty units
208(1)	Parking within 3m of a continuous dividing line or dividing strip unless permitted by a sign.	0.3 penalty units
210(1)	Angle parking - failing to properly position the vehicle.	0.3 penalty units
211(2)	Parking otherwise than completely within the confines of a parking bay	0.3 penalty units
Part 12	Other parking offences provided for in Part 12 (Restrictions on stopping and parking)	0.3 penalty units

Schedule 4 Dictionary

Section 4

community service organisation means an association incorporated under the *Associations Incorporation Act 1981* which has as the main purpose of its objects, making financial gain for community service, charitable or similar purposes.

community service organisation parking permit see section 7(3).

local government employee means an employee of Toowoomba Regional Council.

local government employee parking permit see section 7(8).

local government works parking permit see section 7(7).

residence means a building, or part of a building, that is -


- (a) fixed to land; and
- (b) designed, or approved by a local government, for human habitation by a single family unit; and
- (c) used for residential purposes.

resident parking permit see section 7(2).

temporary parking permit see section 7(4).

works zone parking permit see section 7(6).

This and the preceding 28 pages bearing my initials is a certified copy of the consolidated version of *Subordinate Local Law No. 5 (Parking) 2011* prepared and adopted in accordance with section 32 of the *Local Government Act 2009* by Toowoomba Regional Council by resolution dated the 16 day of August 2022.


Chief Executive Officer